

Using a Household Power Outlet

Article ID: ART136328 | Date published: 05/13/2015 | Date last updated: 11/04/2015

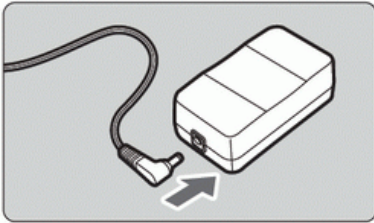
Description

Using a Household Power Outlet

Solution

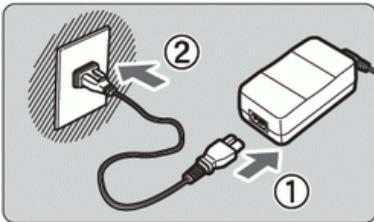
Using a Household Power Outlet

With the AC Adapter Kit ACK-E6 (sold separately), you can connect the camera to a household power outlet and not worry about the remaining battery level.



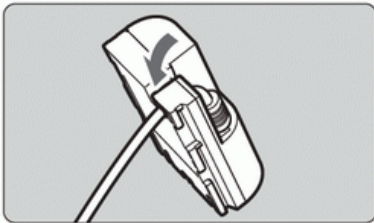
1 Connect the DC Coupler's plug.

- Connect the DC Coupler's plug to the AC Adapter's socket



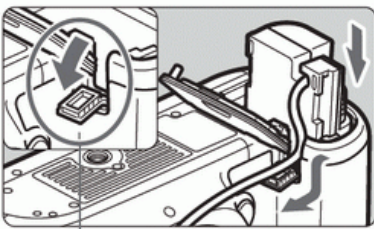
2 Connect the power cord.

- Connect the power cord as shown in the illustration.
- After using the camera, unplug the power plug from the power outlet.



3 Place the cord in the groove.

- Insert the DC Coupler's cord carefully without damaging the cord.



4 Insert the DC Coupler.

- Open the battery compartment cover and open the DC Coupler cord hole cover.
- Insert the DC Coupler securely until it locks and put the cord through the hole.
- Close the cover.

Do not connect or disconnect the power cord or DC Coupler while the camera's power switch is set to <ON>.

© 2018 Canon U.S.A., Inc. All Rights Reserved. Reproduction in whole or in part without permission is prohibited.